

Type-species: *Beris nitens* Latreille, 1809.

The generic revision of the Beridinae is very necessary, based on the material from the world.

It is noteworthy that the number of spine-like processes on scutellum and the presence or absence of the vein M_1 vary with the individual within the same species, although these features are often used in distinguishing the genera or tribes.

Chorisops Rondani, 1856 is very similar to *Actina* Meigen, 1804 but is distinguished from the latter by having the eye bare, the antennal segment 2 over 1/2 as long as segment 1, and segments 1+2 less than 1/2 as long as flagellum, and in ♂ (as well as in ♀) face, front, and occiput without long, erect hairs, although it is uncertain whether or not these characters are significant in separating the genera.

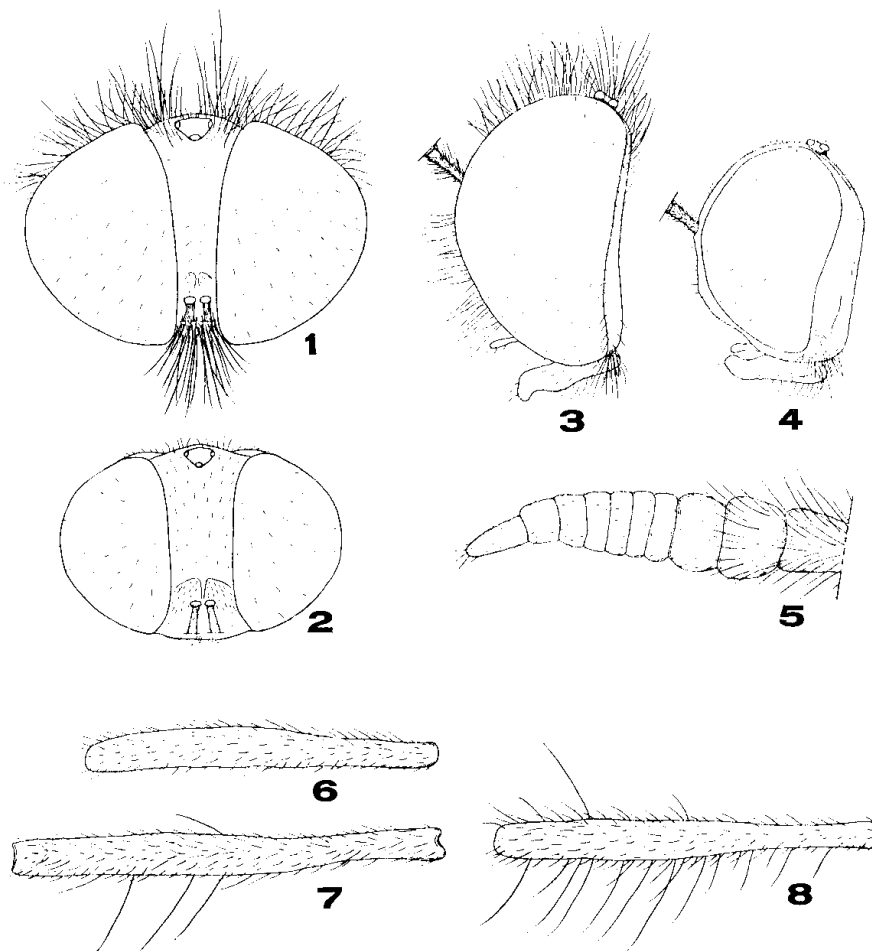
In *Hoplacantha* Rondani, 1863, the antennal flagellum short and rounded and the eyes of ♂ contiguous (after Lindner, 1936 38: 27), while in *Actina* and *Chorisops* the antennal flagellum slender and the eyes of ♂ distinctly separated.

Frey (1960) described 3 new species as *Chorisops* from Burma (Kambaiti) and considered that the species reported as *Hoplacantha* from Japan, Formosa, and Sikkim might belong to *Chorisops*. But it is certain that each of at least 2 species described by him as new is a typical *Actina*, judging from his following statement, "Hierzu kommt noch, dass, wie mein *Chorisops*-Material zeigt,.....Stirn und Gesicht beim ♂ können auch sehr lang abstehehend struppig behaart sein (beim exotischem Material soll man bei diesem Merkmal jedoch vorsichtig sein, da diese Behaarung leicht zerstört wird)."

Key to species of *Actina* known from Japan

1. ♂ (width of one eye on a mid line from a direct frontal view over 2 1/2 width of front just above antenna) 2
 - ♀ (width of one eye on a mid line from a direct frontal view less than twice width of front just above antenna) 4
2. Femur and tibia (excepting knee and sometimes mid tibia) dark brownish to blackish; a metallic blue or green tinge on abdomen more distinct in better preserved specimens; tibia with longer, erect hairs on posterior or ventral surface (Figs. 7-8); antenna much longer than distance from antenna to median ocellus (1.4-1.5 times) 3
 - Femur and tibia (excepting hind tibia) yellowish brown; a metallic blue or green tinge on abdomen practically absent; tibia without longer, erect hairs (Fig. 6); antenna slightly longer than distance from antenna to median ocellus (1.1-1.2 times)..... *japonica*
3. Discal cell longer (0.4-0.5 times as long as vein M_1) and bases of veins M_1 and M_2 usually well separated from each other; hind basitarsus except apical portion yellowish brown; bristle-like hairs on *posterior* surface of mid tibia not many (not more than 10; usually 3-5) in number (Fig. 7) *jezoensis*
 - Discal cell shorter (0.3 times as long as vein M_1) and bases of veins M_1 and M_2 usually connected with each other; hind basitarsus wholly dark brownish; bristle-like hairs on *ventral* surface of mid tibia numerous in number (Fig. 8) *nigripes*
4. Antenna about twice as long as distance from antenna to median ocellus (1.8-2.2 times); abdomen with a more distinct metallic blue or green tinge in better preserved

- specimens 5
- Antenna about 1 1/2 as long as distance from antenna to median ocellus (1.4-1.6 times); abdomen at least practically without a metallic blue or green tinge and sometimes with yellowish brown parts; tibia (excepting hind tibia) always yellowish brown..... *japonica*
 - 5. Discal cell longer (0.4-0.5 times as long as vein M_1) and bases of veins M_1 and M_2 usually well separated from each other; hind basitarsus except apical portion and fore- and mid tibia yellowish brown *jezoensis*
 - Discal cell shorter (0.3 times as long as vein M_1) and bases of veins M_1 and M_2 usually connected with each other; hind basitarsus and fore- and mid tibia dark brownish *nigripes*



Figs. 1-4. Head of *Actina japonica* (1 2: direct frontal view; 3 4: lateral view; 1 & 3: ♂; 2 & 4: ♀). Fig. 5. Antenna (excluding basal portion of segment 1) of *Actina japonica*, ♂, outer view. Figs. 6-8. Mid-tibia of *Actina*, ♂, dorsal view (6: *japonica*; 7: *jezoensis*; 8: *nigripes*).